

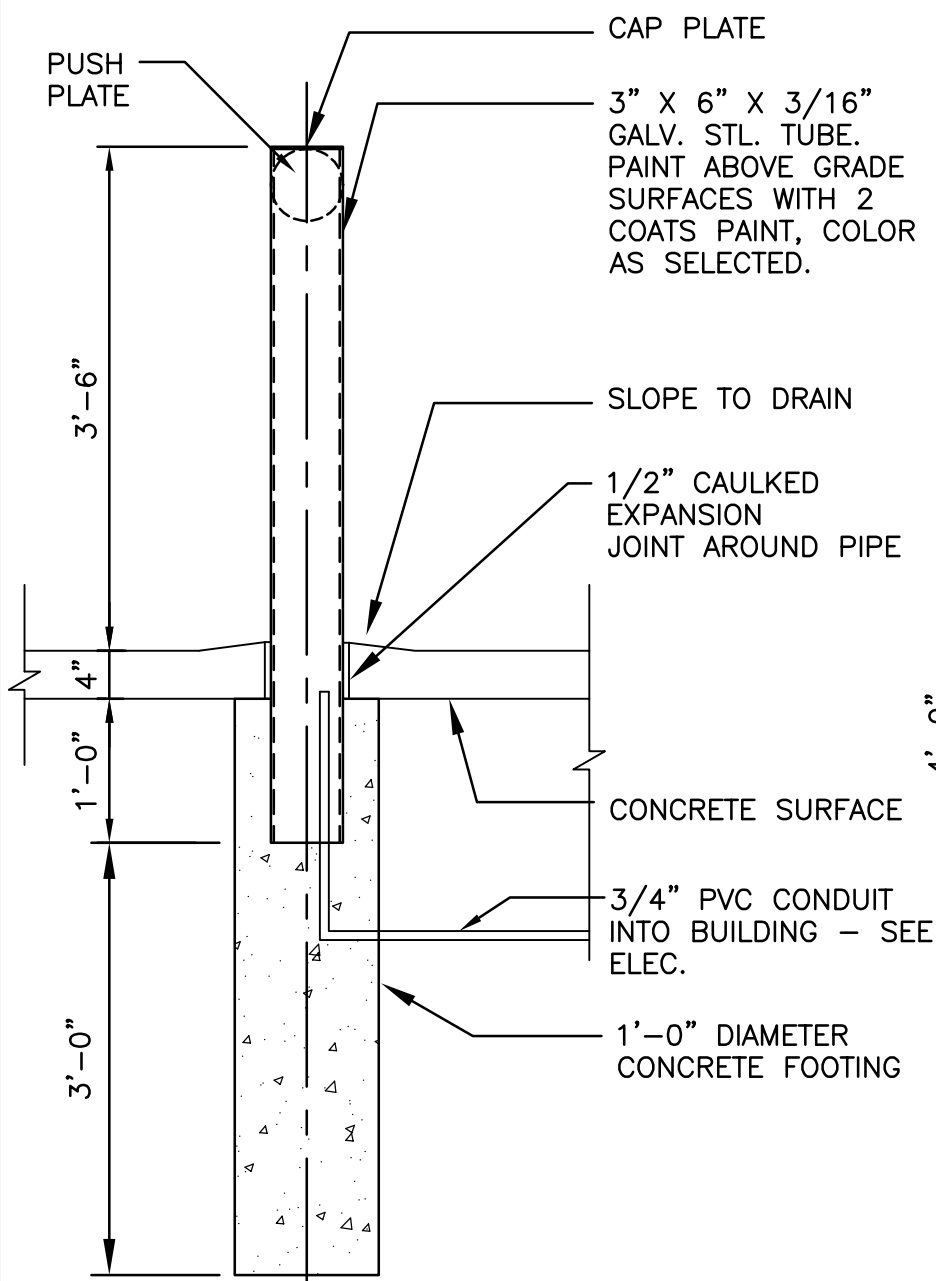
PLAN NOTES

- 1 BRACKET HUNG FIRE EXTINGUISHER
- 2 RECESSED FIRE EXTINGUISHER CABINET
- 3 ACCESS TO ATTIC
- 4 DISH FLOOR WITH 3" FLOOR DRAIN WITH 1'-0" DIAMETER AROUND DRAIN. TOP OF DRAIN= 99'-11"
- 5 4'-0" MOP SHELF
- 6 MARKER BOARD

GENERAL NOTES

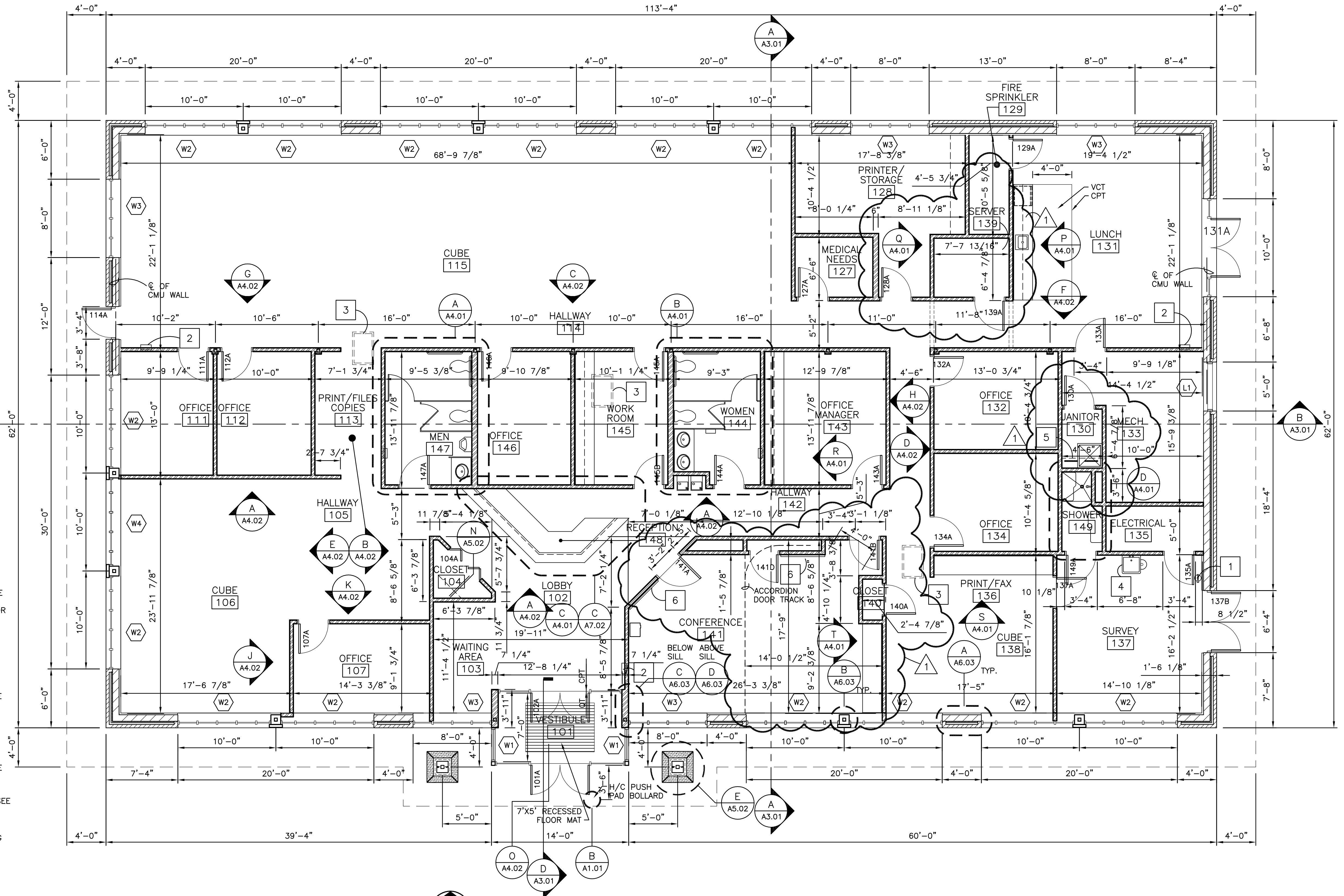
1. SEE SHEET A0.01 FOR LOCATION OF UL FIRE RATED ASSEMBLIES

FULL HEIGHT GYP. BD. PARTITION WALL



B DOOR OPERATOR BUTTON POST
3/4" = 1'-0"

A FLOOR PLAN
3/16" = 1'-0"



HEREBY CERTIFY THAT THIS PLAN, SPECIFICATION, OR REPORT WAS PREPARED BY ME OR UNDER MY SUPERVISION AND THAT I AM A DULY LICENSED ARCHITECT UNDER THE LAWS OF THE STATE OF MINNESOTA.
 PRINT NAME: MARK C. FORBES
 SIGNATURE: _____ LIC. NO. 17452
 DATE: 02-24-06
 PROJECT NO. 35606001

St. Paul Office
 2335 West Highway 36
 St. Paul, MN 55113
 Phone: 651-636-4600
 Fax: 651-636-1311
 © BONESTROO, ROSENE, ANDERLIK & ASSOCIATES, INC. 2006

Bonestroo
 Rosene
 Anderlik &
 Associates
 Engineers & Architects
 www.bonestroo.com

D & L PARTNERSHIP, LLC.
 ROCHESTER - NEW OFFICE BUILDING
 MAIN FLOOR PLAN

35606001A101
 SHEET NUMBER
A1.01